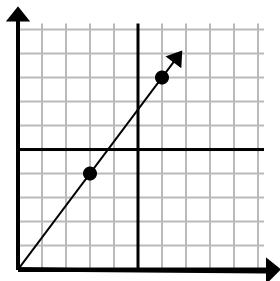




Определите, какой вариант представляет собой точку на линии, если она будет продолжаться.

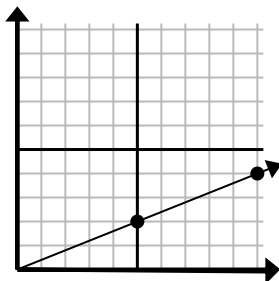
Ответы

1)



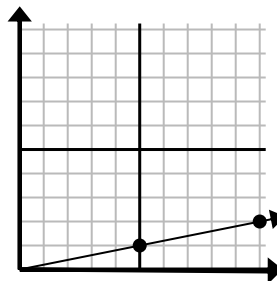
- A. (18 24)  
 B. (15 20)  
 C. (9 12)  
 D. (9 5)

2)



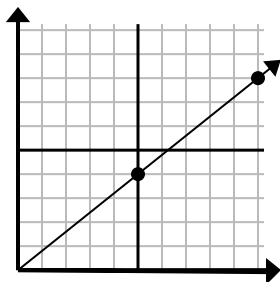
- A. (11 7)  
 B. (25 10)  
 C. (30 12)  
 D. (15 6)

3)



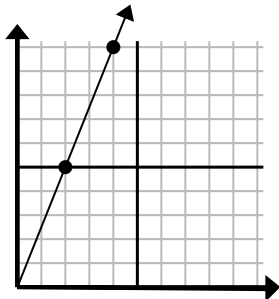
- A. (15 3)  
 B. (20 4)  
 C. (30 6)  
 D. (12 6)

4)



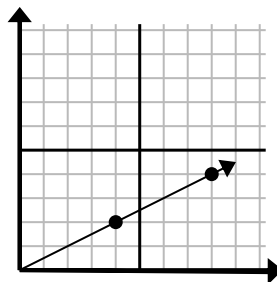
- A. (13 5)  
 B. (15 12)  
 C. (30 24)  
 D. (11 6)

5)



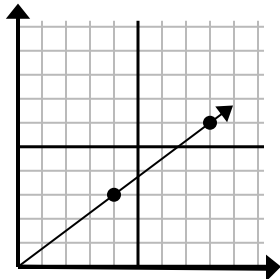
- A. (8 20)  
 B. (7 6)  
 C. (6 15)  
 D. (10 25)

6)



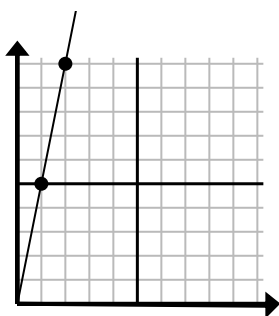
- A. (24 12)  
 B. (28 14)  
 C. (12 6)  
 D. (10 4)

7)



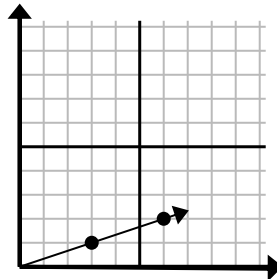
- A. (12 9)  
 B. (24 18)  
 C. (12 4)  
 D. (16 12)

8)



- A. (6 8)  
 B. (3 15)  
 C. (7 7)  
 D. (6 30)

9)

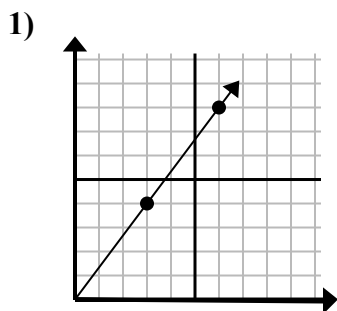


- A. (9 3)  
 B. (8 6)  
 C. (7 2)  
 D. (18 6)

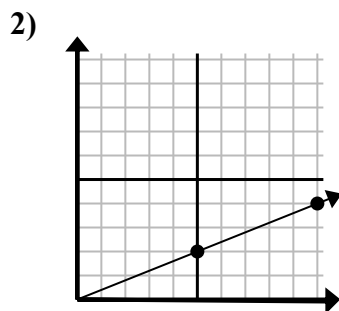
1. \_\_\_\_\_  
 2. \_\_\_\_\_  
 3. \_\_\_\_\_  
 4. \_\_\_\_\_  
 5. \_\_\_\_\_  
 6. \_\_\_\_\_  
 7. \_\_\_\_\_  
 8. \_\_\_\_\_  
 9. \_\_\_\_\_



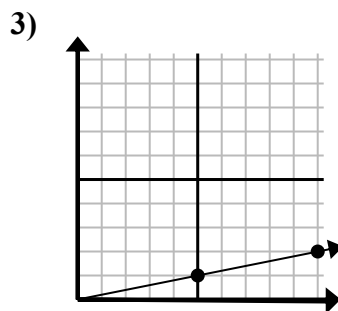
Определите, какой вариант представляет собой точку на линии, если она будет продолжаться.



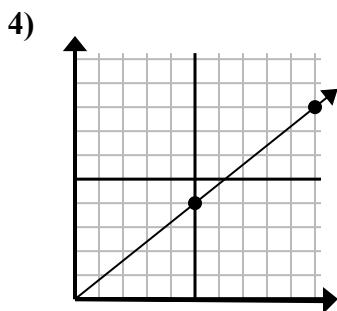
- A. (18 24)  
B. (15 20)  
C. (9 12)  
D. (9 5)



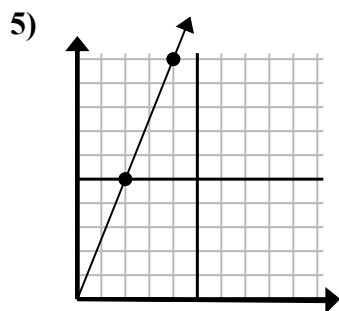
- A. (11 7)  
B. (25 10)  
C. (30 12)  
D. (15 6)



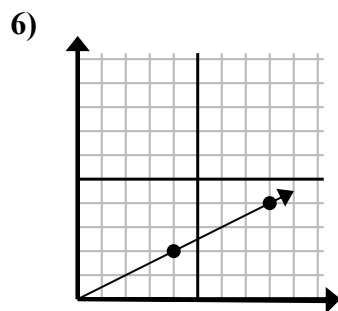
- A. (15 3)  
B. (20 4)  
C. (30 6)  
D. (12 6)



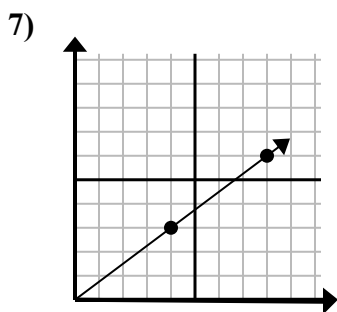
- A. (13 5)  
B. (15 12)  
C. (30 24)  
D. (11 6)



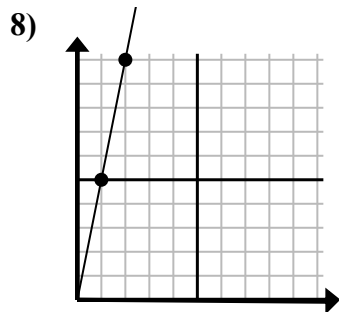
- A. (8 20)  
B. (7 6)  
C. (6 15)  
D. (10 25)



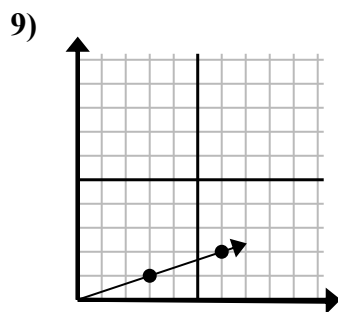
- A. (24 12)  
B. (28 14)  
C. (12 6)  
D. (10 4)



- A. (12 9)  
B. (24 18)  
C. (12 4)  
D. (16 12)



- A. (6 8)  
B. (3 15)  
C. (7 7)  
D. (6 30)



- A. (9 3)  
B. (8 6)  
C. (7 2)  
D. (18 6)

ОТВЕТЫ1. C2. D3. A4. B5. C6. C7. A8. B9. A